

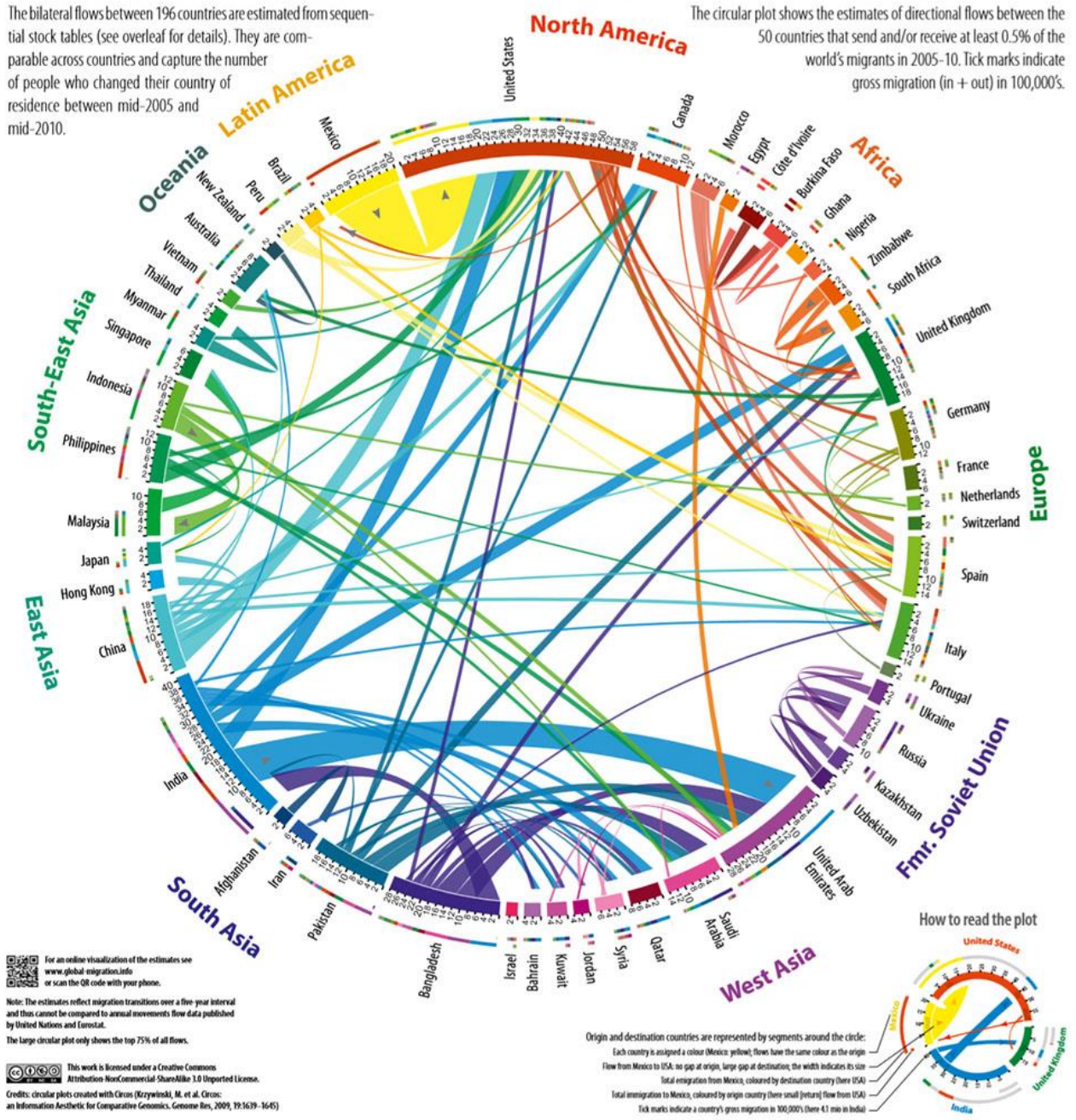
Rappresentazione grafica di migrazioni negli ultimi 20 anni a livello planetario

<http://www.ilpost.it/2014/03/29/infografica-migrazioni-mondo-ultimi-venti-anni/>

Unique estimates of migration flows between the top 50 sending and receiving countries

The bilateral flows between 196 countries are estimated from sequential stock tables (see overleaf for details). They are comparable across countries and capture the number of people who changed their country of residence between mid-2005 and mid-2010.

The circular plot shows the estimates of directional flows between the 50 countries that send and/or receive at least 0.5% of the world's migrants in 2005-10. Tick marks indicate gross migration (in + out) in 100,000's.



For an online visualization of the estimates see www.global-migration.info or scan the QR code with your phone.

Note: The estimates reflect migration transitions over a five year interval and thus cannot be compared to annual movements flow data published by United Nations and Eurostat.

The large circular plot only shows the top 75% of all flows.

This work is licensed under a Creative Commons Attribution NonCommercial ShareAlike 3.0 Unported License.

Credits: circular plots created with Circos (Kozyrinski, M. et al. Circos: an Information Aesthetic for Comparative Genomics, Genome Res, 2009, 19:1629-1645)